

[View this email in your browser](#)

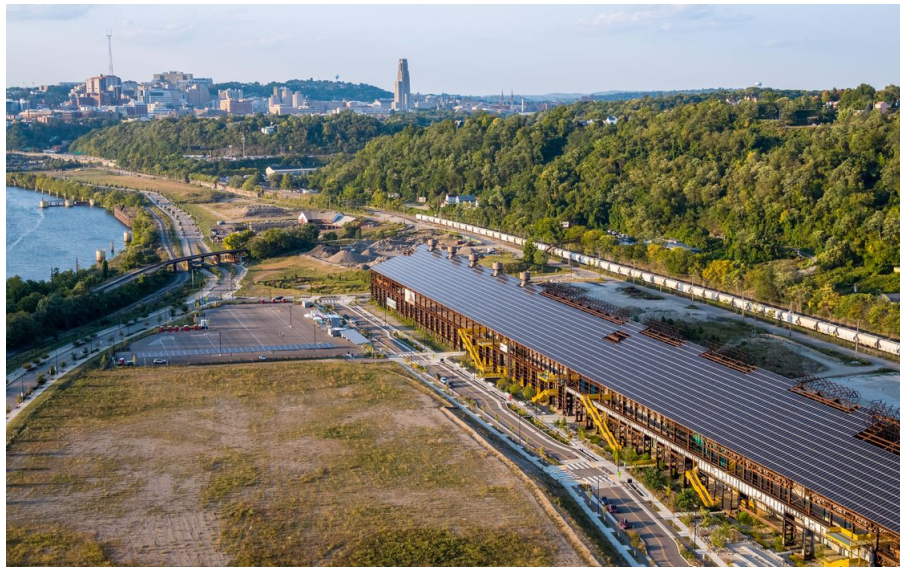


Hazelwood Green Quarterly December 2020

Despite the unprecedented challenges presented by COVID-19, these past 12 months have seen steady progress in the development of Hazelwood Green.

We kicked off 2020 with the January opening of Lytle, Beehive, and Eliza Streets, Pittsburgh's first "complete streets." Momentum continued in February with City Planning Commission approval of plans for renovation of the Roundhouse and OneValley's commitment to occupy the space as a tenant. In early March, construction came to a halt as Pittsburgh, the country and the world found itself in the throes of a global pandemic. Working in tandem with public health officials, the construction industry responded swiftly, establishing new health and safety protocols to protect workers, and by May, on-site construction had resumed. The summer months saw continued progress at the Roundhouse and Plaza, final installation of the massive solar array on the rooftop of Mill 19, and completion of solar panel structures at parking lots at the site. In September, the site hosted its first major event, an outdoor drive-in community arts festival presented by City Theatre.

*Check out the **News** section of our website for stories you may have missed this past year detailing the ongoing development at Hazelwood Green. Read on for the latest news and be sure to follow us on Twitter and Instagram @HazelwoodGreen.*



Designers Sought for Bus Shelters in Hazelwood

The Office of Public Art recently issued a Request for Proposals (RFP) seeking

an interdisciplinary team of artists, architects, and/or engineers to design a new bus shelter standard for Hazelwood. The project will result in the design and fabrication of eight bus shelters that will be installed on the Hazelwood Green site and in the Greater Hazelwood neighborhood. The bus shelter project is being funded in part through a grant provided by Uber.

“The vision for Hazelwood Green is one that carefully measures all natural and built aspects of the site - from the design of Hazelwood Green’s streets, to the architecture of the public plaza, to trails, gardens and green spaces – in light of establishing a connection to the Greater Hazelwood neighborhood,” says Todd Stern, Managing Director of U3 Advisors, development advisor to Almono for Hazelwood Green. “A bus shelter is a simple space, but it is an important one to those who live and work in the community. Through this partnership with the Office of Public Art, we have the opportunity to go beyond mere functionality and integrate quality design into shelters at Hazelwood Green and at public transportation stops throughout the neighborhood.”

Design teams must include a visual or literary artist, and an architect or structural engineer. At least one team member must be a resident of southwestern Pennsylvania. Artists, architects, and engineers who identify as women, Black, Indigenous, and/or people of color are strongly encouraged to apply.

[Click here](#) to access the RFP. Submissions are due Wednesday, January 6, 2021 at 11:59 PM and will be reviewed by a selection committee; up to three teams will be invited for an interview. The bus shelters are slated to be completed and installed late 2021.

Renovating the Roundhouse

Architects, engineers, and construction crews continue renovation efforts at the Roundhouse, which is on target for a spring 2021 completion. As teams continue the process of transforming an industrial building originally designed exclusively for machines into a space for people, tremendous care is being taken to respect the heritage of the building and to save and repurpose its original elements.

The original turntable surface — once used to reposition the trains — is being rebuilt to function as an outdoor relaxation space, with wheeled seating built on the rails. The construction crew also removed the original bridge to be repainted. No small feat, this effort first required stationing a construction crane outside the building. Crews guided the crane to drop a hook through a fan opening in the roof and attach it to the bridge crane, which was lifted off its tracks, and with the help of a smaller crane stationed inside, lowered and moved out in two pieces. The bridge crane was then disassembled and repainted on site before being reassembled and rehung in the building.

Another signature feature of the Roundhouse is its curved front, which formerly was covered by industrial overhead engine bay doors. These doors were removed and will be replaced with a glass curtain wall that will bring daylight into the space and allow for open views to the outdoors.

Local small manufacturers and artisans are being engaged to design new elements of the space through a partnership with Monmade. Through this collaboration, dozens of additional regional companies along the supply chain are being contracted to provide product for use in the building, including interior and exterior signage, interior lighting, wall tile, a reception desk, kitchen island, wall coverings celebrating Pittsburgh neighborhoods and history, custom benches, interior and exterior bike racks, custom wall panels and sliding doors.

When completed, the Roundhouse will be home to the OneValley Pittsburgh Innovation Center. **OneValley** (formerly GSVlabs), is a global entrepreneurship platform that enables entrepreneurs to access capital, tools, community, and

resources to grow their business. The Pittsburgh Innovation Center will also offer education programs, events and workshops for local small businesses, students, and community members.



Progress at the Plaza

Almono and its team designed, funded, and constructed a 2-acre public Plaza south of Mill 19 that will serve as the civic heart of Hazelwood Green. The design includes gardens, lawns, trees and native vegetation, a solar canopy, a tiered water feature, and hardscape surfaces that will allow the space to accommodate a range of uses and events. Construction of the Plaza is in its final stages, and the space will be open to the public in January.

Almono is also working with the Pittsburgh Parks Conservancy and POORLAW to plan and install a tree nursery on site, where young trees will grow and mature before being moved to other locations around the site. The nursery is planned to include tree species that mitigate air pollution and a meadow with seating options for public enjoyment.

Almono engaged a team led by Street Plans, Prism Collective, Edith Abeyta, and Renee Piechocki to plan and execute programming at the Plaza and throughout the Hazelwood neighborhood. Throughout 2021, the programming team will work with Hazelwood Green tenants, the Hazelwood neighborhood, and citywide cultural arts partners to create a welcoming and inclusive Plaza. The team held its first neighborhood activation in October, a socially distanced outdoor pumpkin festival, that was well attended by the community. In addition to supporting Hazelwood holiday initiatives this winter, the programming team is also organizing a virtual business marketing workshop with Digital Bridges on January 14 at 6:30 p.m. The next Community Action Team meeting to discuss ideas for spring programs will be held January 13 at 6:00 p.m. via Zoom. Visit [HazelwoodLocal.eventbrite.com](https://www.hazelwoodlocal.com) for registration and more information about upcoming events.

The programming team is creating an online platform ([HazelwoodLocal.com](https://www.hazelwoodlocal.com)) to showcase Plaza events, local businesses and organizations, and community-led neighborhood happenings. Check out @HazelwoodLocal on Instagram for more updates.



A Master Plan for the Riverfront

In September, the Pennsylvania Environmental Council (PEC) launched a master planning and public input process to guide the development of land immediately along the riverfront at Hazelwood Green. The riverfront comprises approximately 21 acres and extends 1.3 miles, with terrain that varies from flat stretches to steep inclines that drop directly to the Monongahela River. When completed, the master plan will direct decisions on developing the land for recreational use and public enjoyment, as well as the use and preservation of industrial structures that remain at the river's edge, including a pump house, mooring cells, coal loaders, and catwalks.

Most importantly, the Riverfront Master Plan will reconnect the surrounding neighborhood to the river and create a welcoming, accessible space for all to enjoy.

An advisory committee made up of neighborhood, city, regional and site representatives was formed to lend guidance to the design process, and the project team has been gathering public input since September via paper and online surveys; a neighborhood popup and social events in Hazelwood; a three-day collaborative workshop in October; and a survey of 6th-8th grade students at Propel Hazelwood. The design team summarized key takeaways from these community outreach events in a report (accessible [here](#)). These priorities will be incorporated into the next stage of the Riverfront Master Plan, which will be presented to the public in spring 2021.

At Hazelwood Initiative's January community meeting, the design team will share project updates and information about additional opportunities to weigh in on the plan. The plan will be completed in late 2021.

The Riverfront Master Plan Project is made possible through a grant from the Pennsylvania Department of Conservation and Natural Resources (DCNR) to the Pennsylvania Environmental Council, as well as matching funds from Almono.



See you in 2021!



Copyright (C) 2020 Almono LLC. All rights reserved.

[Update Preferences](#) | [Unsubscribe](#)

